

/ Funding Opportunities /



FLORIDA ATLANTIC UNIVERSITY

Foundation, Inc.

**THE KURT & MARILYN WALLACH
HOLOCAUST AND JEWISH STUDIES BUILDING**
EDUCATION IS OUR BEST HOPE AGAINST HATRED



Architectural rendering

Dorothy F. Schmidt College of Arts and Letters



TRANSFORMING OUR FUTURE THROUGH EDUCATION

Imagine a world where all people are treated with dignity and respect. Where students and individuals in our communities, throughout the country and across the globe forever defeat genocide and threats to human rights, such as intolerance, antisemitism, racism and ignorance.

We believe education is our best hope against hatred. That's why **The Kurt and Marilyn Wallach Holocaust and Jewish Studies Building** matters so much to our endeavor — and our community.



With your philanthropy, you can complete the vision of Kurt and Marilyn to support education — our best hope against hatred. Their vision starts with a home where we educate students to understand other cultures, traditions and languages; prepare teachers to use history's lessons to combat the ignorance, fear and distrust that breeds hatred and violence; and engage our community in meaningful conversations and lifelong learning to expand our impact to individuals of all ages, genders and religions.

That's why the Wallach Building — and its future institute — is mission-critical. By making the lessons of the past relevant today, we teach the importance of speaking up and acting against all forms of bigotry, hatred and prejudice.

We are indebted to the Wallachs for their transformational and lead gift to begin something big—now, we welcome you to link arms with us to expand their vision, and make Florida Atlantic University an epicenter of Holocaust and human rights education.

This proposal outlines an exciting plan for a forward-looking facility to serve our many constituencies with the latest in technologically sophisticated learning spaces, and state-of-the-art exhibition center. *It also outlines the specific needs that will make this initiative a national success.*

Florida Atlantic University is on a journey to become the nation's leader in creating and assuring peace, justice and human rights — for all. You can fortify our foundation and transform the future through the world-class **Kurt and Marilyn Wallach Holocaust and Jewish Studies Building**.

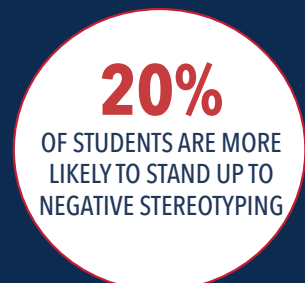
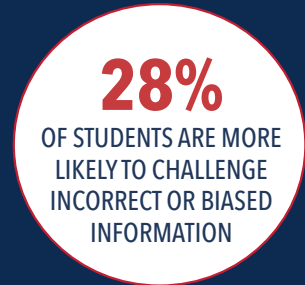
Warmly,

Michael J. Horswell, Dean
Dorothy F. Schmidt College of Arts and Letters



THE IMPACT OF HOLOCAUST EDUCATION

According to results from a 2020 Echoes and Reflections* survey, students exposed to Holocaust education demonstrate higher critical thinking skills and a greater sense of social responsibility, as well as civic engagement, if survivor testimony was part of their experience.



*Echoes and Reflections is a partnership between the Anti-Defamation League, the USC Shoah Foundation, and Yad Vashem: The World Holocaust Remembrance Center.

////////////////////

ABOUT OUR COMMITMENT TO PEACE, JUSTICE, AND HUMAN RIGHTS

At Florida Atlantic University, we aspire to build a culture of tolerance and respect as we work to eradicate racism, prejudice and hate. In 2014, Florida Atlantic established the Peace, Justice and Human Rights Initiative which has grown into a Center, a university-wide effort that brings together scholars, practitioners, and community leaders engaged in the themes of nonviolence, peace, justice and human rights. One program that empowers the next generation of leaders and changemakers is the Leon Charney Diplomacy Program.

Faculty within the College include nationally and internationally recognized experts across many relevant fields including Holocaust studies, Jewish studies, Middle East studies, international relations, world religion, human rights, language, culture, and more.



THE CENTER FOR PEACE, JUSTICE AND HUMAN RIGHTS INCLUDES THE ARTHUR AND EMALIE GUTTERMAN FAMILY CENTER FOR HOLOCAUST AND HUMAN RIGHTS EDUCATION AND THE LEON CHARNEY DIPLOMACY PROGRAM.

THE ARTHUR AND EMALIE GUTTERMAN FAMILY CENTER FOR HOLOCAUST AND HUMAN RIGHTS EDUCATION

As generations of Holocaust survivors are no longer able to tell their stories, education is more important than ever. That's why Florida Atlantic University established the Center for Holocaust and Human Rights Education in 1996, and renamed it for the Gutterman Family in September 2020. For the past 25 years, the Center has provided K-12 teachers with training for the teaching of the Holocaust and programs for the community.

THE LEON CHARNEY DIPLOMACY PROGRAM

The award-winning Leon Charney Diplomacy Program offers students interested in international affairs opportunities to learn and practice diplomatic skills, including speech writing, public speaking, negotiation, dispute resolution and research. Each year, a delegation of student diplomats represent the University in collegiate competitions in Washington D.C. (fall) and New York City (spring).

150 STUDENTS BENEFIT FOR EVERY **1 TEACHER** WHO WORKS WITH THE GUTTERMAN FAMILY CENTER FOR HOLOCAUST AND HUMAN RIGHTS EDUCATION.

A HISTORY OF HOLOCAUST AND JEWISH STUDIES AT FLORIDA ATLANTIC UNIVERSITY

Florida Atlantic University has a long history and commitment to Holocaust and Jewish studies. Among Florida's public universities, Florida Atlantic became the first to create an endowed chair exclusively for the study of the Holocaust in 1993 when we established the **Raddock Family Eminent Scholar Chair in Holocaust Studies**, which led to the creation and development of Florida Atlantic's Holocaust and Jewish Studies Program.

In 1997, the **Herbert and Elaine Gimelstob Chair in Jewish Studies** was established to complement the Raddock Chair and enhance the Jewish Studies Program. The donors felt strongly that everyone in the community would benefit from the chair, both Jewish and non-Jewish, and outlined a mission to promote understanding and tolerance, which they felt was especially important in South Florida.

Both professorships strengthened Florida Atlantic's academic programming in Jewish studies, providing a comprehensive curriculum to promote knowledge and understanding of Jewish history, religion and culture, as well as contributions to other cultures. Today, the program offers both a major, minor and a concentration in the Comparative Studies doctorate program.



“*Majoring in Jewish studies has enriched both my academic and personal life. Academically, the Jewish Studies Program at Florida Atlantic University prepared me for graduate school and provided me a well-rounded education. Personally, majoring in Jewish studies has brought me closer to my religion. The program will always hold a special place in my heart.*”

Sara Goldstein '09



Students from the Leon Charney Diplomacy Program

THE NEXT CHAPTER

As a public university, Florida Atlantic University's core mission is to unleash opportunities for all students. Working together, we will combat prejudice, hatred and indifference by teaching the history of the Holocaust and timeless lessons that will help create a better world for future generations.

Now is the time to redefine the impact and outreach of our programs to ensure Florida Atlantic continues to play a significant role in coordinating Jewish and Holocaust Studies, human rights education, and leadership training across the University, and throughout our community.

Through **The Kurt and Marilyn Wallach Holocaust and Jewish Studies Building**, we will expand access to programs of excellence, including lectures, exhibits and cultural events. The recital/lecture hall will provide music students, faculty and visiting artists a first-class performance space on campus.

We are also engaging new curricula for the University and regional community including non-profit management and leadership certificates and/or academic minors oriented toward the needs of area organizations including Jewish Studies culture, Hebrew language, and Middle East studies. We have listened, and we are ready to respond.



Architectural rendering

INVEST IN EXCELLENCE

The Kurt and Marilyn Wallach Holocaust and Jewish Studies Building will serve as a hub for Holocaust and Jewish Studies, human rights education, and leadership training.

It will also memorialize the six million Jews and other innocent victims of the Holocaust, honor its survivors, and bring together educational programs that champion respect, compassion and understanding.

The Kurt and Marilyn Wallach Holocaust and Jewish Studies Building will include the:

- Arthur and Emalie Gutterman Family Center for Holocaust and Human Rights Education

- Raddock Family Eminent Scholar in Holocaust Studies

- Herbert and Elaine Gimelstob Eminent Scholar in Jewish Studies

- Jewish Studies Program

- The Center for Peace, Justice and Human Rights

- Leon Charney Diplomacy Program

Additionally, it will also house a large, state-of-the-art recital/lecture hall, a traveling exhibition space, a professional development training room, student multimedia studio, and more.



LEGACY AND NAMING OPPORTUNITIES

The Kurt and Marilyn Wallach Holocaust and Jewish Studies Building will have a distinctive home on Florida Atlantic University's Boca Raton campus. Your name – or the name of someone you wish to honor – can be attached to any of the available spaces, vital personnel or programs.

PREMIERE SHARED SPACES

Signature Recital/Lecture Hall: \$2,000,000

Premiere, state-of-the-art 2,700 sf* instruction hall with the capacity to seat 150 for teaching, music performances, and welcoming speakers from all disciplines within the Wallach building, across the university or community organizations. A distinctive hall with comfortable seating, adaptable presentation options, acoustical treatments, and smart technologies to maximize its use to include film screenings, virtual presentations and more.

Traveling Exhibition Hall: \$1,000,000

An exceptional and secure 1,950 sf* gallery space for traveling exhibits from the United States Holocaust Memorial Museum, Yad Vashem - the World Holocaust Remembrance Center and other prominent organizations, offering an inclusive location for diverse programs throughout the year. Smart technologies will enhance presentations and patrons' experiences. A small kitchen space will accommodate receptions and other gatherings.

Grand Lobby: NAMED

First impression space for the building, serving as the main connector to all programs, offices, the recital/lecture hall, exhibition and training spaces. This magnificent site will serve as the heart of the Wallach building and a wonderful location to host special receptions and gatherings.

Outdoor Courtyard and Memorial Garden: \$750,000

A high-visibility and featured focal point of the Wallach building exterior. This beautifully designed outdoor courtyard is a serene and easily accessible location to re-energize or enjoy quiet reflection. A perfect site for outdoor receptions or a gathering site.

Holocaust and Human Rights Professional Development Training Room: \$500,000

Distinctive 58-seat, state-of-the-art 1,250 sf* classroom for university classes and K-12 teacher workshops presented by the Gutterman Family Center for Holocaust and Human Rights Education and the Leon Charney Diplomacy Program. Dynamic learning space with videoconference capabilities, digital and traditional white boards, and teaching enhancements to foster an environment conducive to teaching and learning in various ways.

Large Classroom: \$400,000

Distinctive 40-seat, state-of-the-art 1,000 sf* classroom for university classes and other program use. Dynamic learning space with videoconference capabilities, digital and traditional white boards and teaching enhancements to foster an environment conducive to teaching and learning in various ways.

Student Multimedia Studio: \$500,000

A state-of-the-art 1,000 sf* production site will enrich students' experiential learning with the production of short films and by producing social media video content to battle misinformation that ignites intolerance, antisemitism and racism. It will house equipment and technology to record individual testimonials for a digital history archive and more.

Conference Seminar Room: \$200,000

Premiere 525 sf* state-of-the-art second floor conference room. Smart room technologies provide for a more collaborative experience for remote and in-person learning. Crisp audio, HD video, smart lighting, and internet advancements enhance board meetings and conferences and offer multiple use opportunities with the latest technologies.

Wall of Recognition and Remembrance: \$250,000

Prominent donor recognition and remembrance digital display in the Grand Lobby of the Kurt and Marilyn Wallach Holocaust and Jewish Studies Building. Opportunity to acknowledge a broad level of altruistic supporters and educate against hate, antisemitism and indifference. Digital wall will also display public programming within the building.

Student Study Space: \$300,000

Second floor 725 sf* collaborative or individual spaces designed to maximize its use for diverse study habits.

Tree of Life Grand Entrance: \$150,000

Prominent main entrance with a distinctive Tree of Life design element leading into the Wallach building's first floor.

Meeting Room: \$75,000

Intimate second floor 200 sf* "huddle" room for small meetings and gatherings.

PROMINENT NAMING OPPORTUNITIES

Weiner Holocaust Museum Director: \$2,000,000

Endowment opportunity to fund the Director position for the Craig and Barbara Weiner Holocaust Museum. Annual spending will cover the salary and benefits of this key personnel who will direct programming and oversee operations within the museum.

Dimensions and Testimony: \$300,000

State-of-the-art digital display enabling visitors to have virtual conversations with Holocaust survivors and other witnesses to genocide.

Recital Hall Grand Piano: \$125,000

Elegant 7-ft Bosendorfer baby grand piano with high calibre sound quality and aesthetic appeal for the Recital/Lecture Hall.

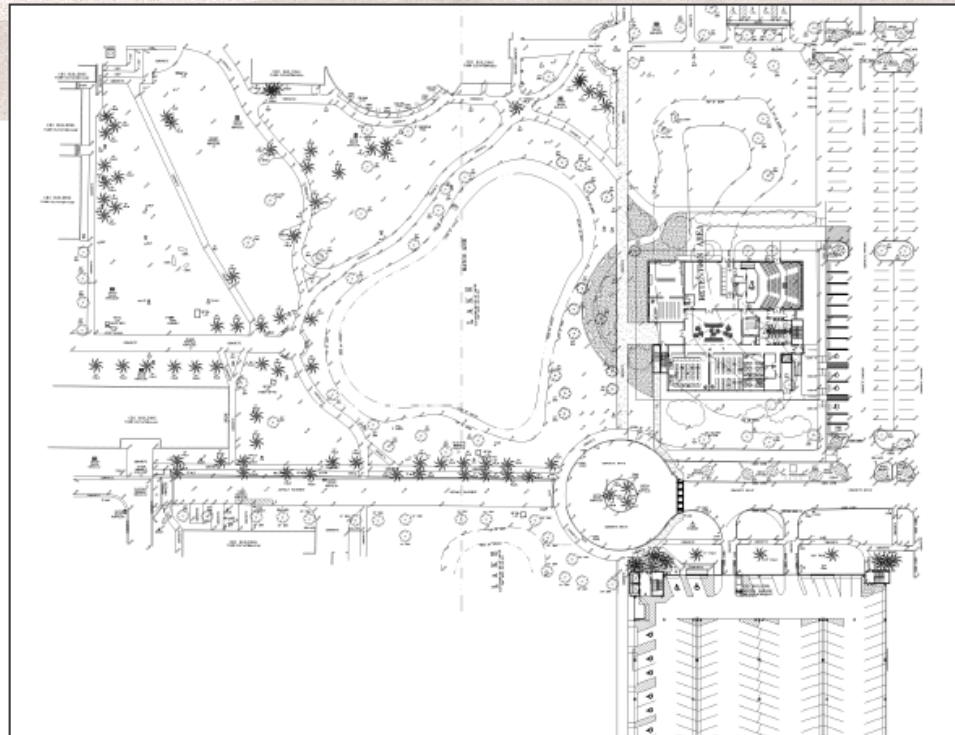
Naming opportunities may be pledged over multiple years and include an estate gift designation. All gifts are considered tax-deductible.

**Estimated, subject to final design*

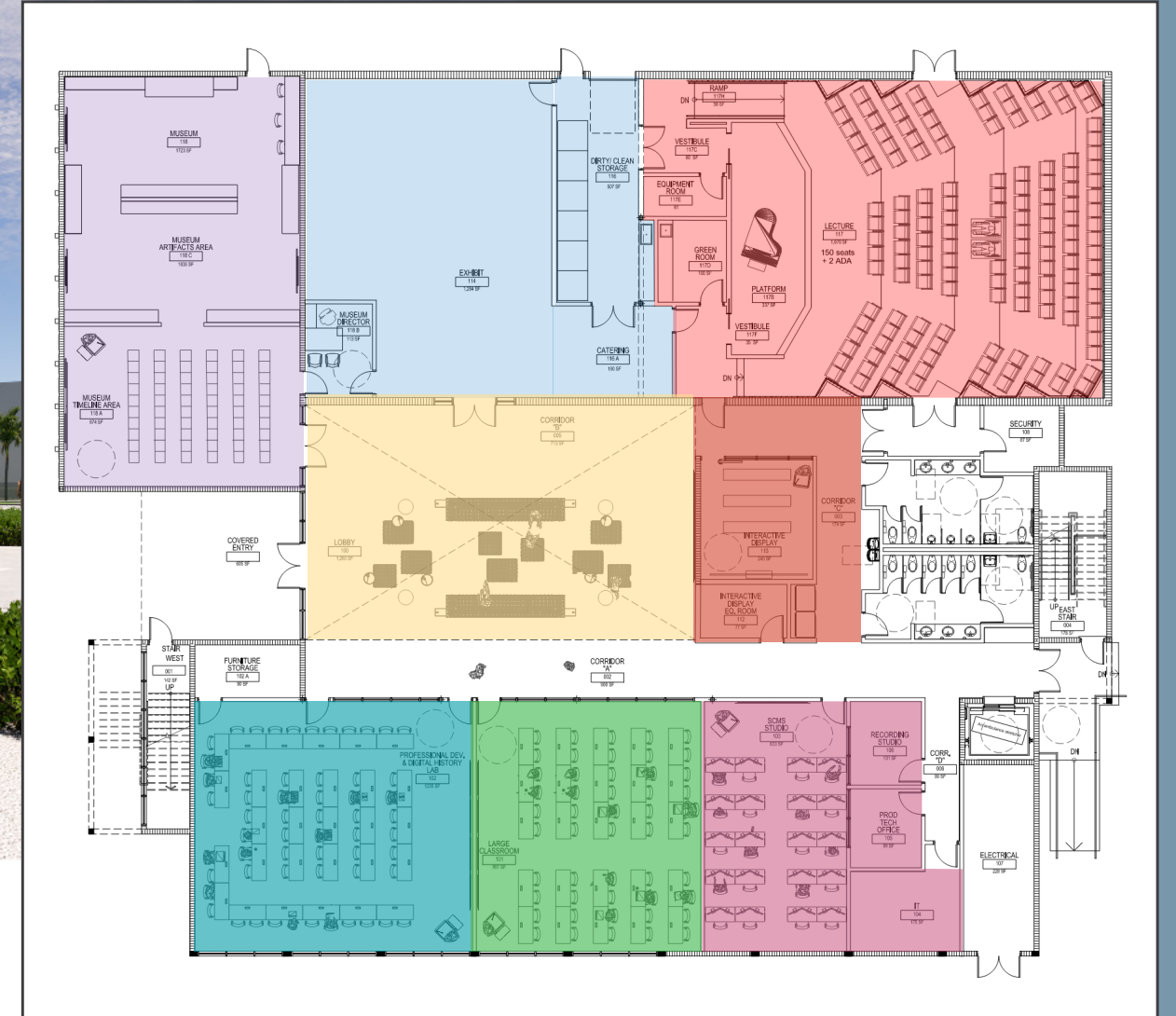
LOWER LEVEL BUILDING DESIGN



Architectural rendering



The beautifully designed Outdoor Courtyard and Memorial Garden is a serene and easily accessible lakeside location adjacent to the building to re-energize or enjoy quiet reflection. It is an ideal site for outdoor receptions or a gathering site.



- Weiner Holocaust Museum
- Exhibition Hall
- Recital and Lecture Hall
- Weinberg Grand Lobby
- Dimensions and Testimonial
- Professional Development Training Room
- Large Classroom
- Student Multimedia Studio

UPPER LEVEL BUILDING DESIGN



PREMIER SHARED SPACES

SIGNATURE RECITAL/LECTURE HALL

The Kurt and Marilyn Wallach Holocaust and Jewish Studies Building will be a significant site for programs that celebrate all cultures and traditions. It will host meaningful public conversations and lifelong learning for people of all ages and backgrounds.

The 2,700 sf state-of-the-art recital and lecture hall will be a premiere space within the Wallach building for music performances, public lectures, film screenings, literary talks, cultural events, and more. The hall also offers the Department of Music a valuable space for end-of-the-semester student recitals or other intimate concerts.

This distinctive 150-seat hall with comfortable seating will also be used for teaching and welcoming speakers from all disciplines within the Wallach building, across the university or from community organizations. Adaptable presentation options, acoustical treatments, and smart technologies will maximize its use as an extraordinary, first-class venue to enrich public offerings and enhance the diversity of programming in this multi-use, versatile hall, attracting tourists, visitors, and community residents to the Wallach building.

Prominently located off the Marilyn and Jay Weinberg Grand Lobby, the hall provides an extraordinary space to entertain patrons at receptions or other special activities in a grand, welcoming space following signature programs presented in the hall.



PREMIER SHARED SPACES

CRAIG AND BARBARA WEINER HOLOCAUST MUSEUM OF SOUTH FLORIDA AT FLORIDA ATLANTIC UNIVERSITY

The Craig and Barbara Weiner Holocaust Museum will be a distinctive educational and cultural space within the Kurt and Marilyn Wallach Holocaust and Jewish Studies Building. This 2,000 sf museum will serve as the permanent home for historical Holocaust artifacts donated by the Weiners to educate students and the community about this horrible period of our history – the Holocaust. Artifacts and their stories educate firsthand what is derived from hate, intolerance, antisemitism, racism, and bigotry.

An educational outreach program to middle and high school students created by the Weiners will strengthen the outreach of the Gutterman Family Center for Holocaust and Human Rights Education, bringing hundreds of students to the museum each year. The program encourages students to have the courage to follow their moral conscience when witnessing situations they know are wrong, including bullying, which is often the result of hate and intolerance.

A Museum Director will be hired to oversee the Weiner Museum as well as the middle and high school outreach program (2 days/week), an enhancement to Florida Atlantic’s current K-12 teacher professional development through the Gutterman Family Center for Holocaust and Human Rights Education. The director will assist in overseeing the Wallach Exhibition Hall.

Donations to the Weiner Holocaust Museum and the sponsorship of artifacts also will be available.



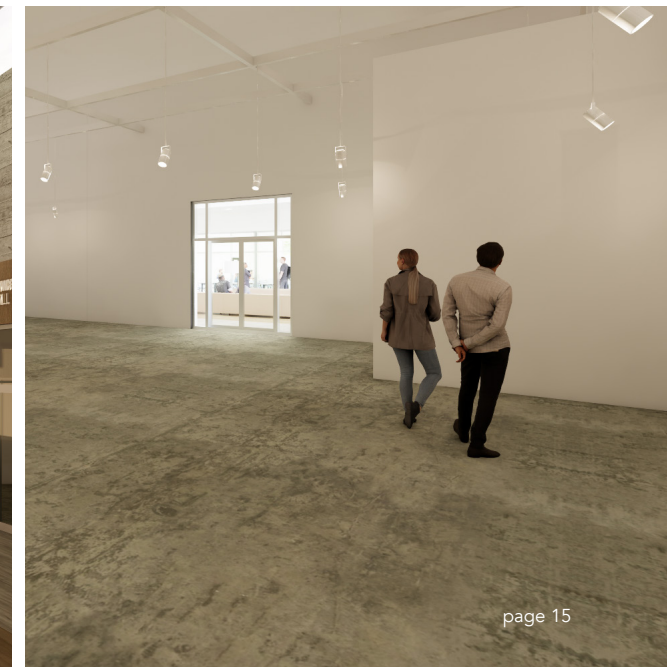
Museum artifacts include men’s concentration camp uniform; women’s clogs from concentration camp; yellow star worn by French Jews.

TRAVELING EXHIBITION HALL

A significant exhibition space within the Kurt and Marilyn Wallach Holocaust and Jewish Studies Building will be a distinctive state-of-the-art traveling exhibition hall. This exceptional and secure 1,950 sf gallery space will host traveling exhibits from the United States Holocaust Memorial Museum, Yad Vashem – the World Holocaust Remembrance Center, and other notable locations.

Exhibits will reflect themes related to the Holocaust, Jewish studies, peace, justice, and human rights, and serve as an epicenter for intercultural dialogue and education to constituents of all age levels.

Prominently located off the Marilyn and Jay Weinberg Grand Lobby, this extraordinary exhibition hall will be an inclusive location for diverse programs throughout the year. Smart technologies will enhance presentations and visitors’ experiences. The space will also be available for receptions, intimate dinners, and other special activities.





PROGRAM OFFICE SUITES

Holocaust, Jewish Studies and Peace, Justice and Human Rights Administrative Office Suite: \$750,000

Deluxe 3,500 sf* office suite for all program areas within the Wallach Building. Strategically designed to serve as a hub of collaboration and connectivity among all directors, faculty and staff housed within this area.

The Arthur and Emalie Gutterman Family Center for Holocaust and Human Rights Education:

The Center provides age-appropriate education on the Holocaust and other genocides to more than 500 K-12 teachers as well as 350 Florida Atlantic University students annually through professional development workshops, the Holocaust Summer Institute, intensive-study opportunities and community programs.

- Director's Office: \$50,000
- Assistant Director's Office: \$25,000

Holocaust and Jewish Studies: The academic programming providing a comprehensive curriculum to promote knowledge and the understanding of the Holocaust, Jewish history, religion and culture, as well as contributions to other cultures.

- The Raddock Eminent Scholar in Holocaust Studies' Office: \$50,000
- The Gimelstob Eminent Scholar in Jewish Studies' Office: \$50,000
- Additional Faculty Offices (2): \$25,000 each

Peace, Justice and Human Rights (PJHR): A university-wide effort established in 2014 designed to bring together scholars, practitioners, students and community leaders to expand the reach and influence of existing peace, justice and human rights programs.

- PJHR Executive Director's Office: \$50,000
- Leon Charney Diplomacy Director's Office: \$50,000
- Future Program Office: \$50,000
- Assistant PJHR Director's Office: \$25,000
- Visiting Scholar Office: \$25,000



PROGRAM AND BUILDING EXCELLENCE ENDOWMENT

Wall of Recognition and Remembrance

Prominent donor recognition with the opportunity to honor a survivor, family member, special individual or an organization. Gifts will establish an endowment to fund programs, student scholarships and fellowships, faculty and building care.

A digital display located in the lobby of the Kurt and Marilyn Wallach Holocaust and Jewish Studies Building will feature individual donors with personalization opportunities as gift level increases. Opportunity to include survivor testimonials.

Name:	Gift Levels:
Benevolence	\$1,000,000+
Altruism	\$750,000+
Nobility	\$500,000+
Vision	\$250,000+
Wisdom	\$150,000+
Leadership	\$100,000+
Inspiration	\$50,000+
Remembrance	\$25,000+
Reflections	\$10,000+

Gifts may be made over multiple years and include an estate gift designation. All gifts are considered tax-deductible.

CONNECTING OUR COMMUNITY

Florida Atlantic University's Boca Raton campus is in close proximity to other Jewish organizations, resources and collections:

- Hillel of Broward and Palm Beach
- Levine Weinberger Center for Jewish Life
- Jewish Collection in the Recorded Sound Archives
- The Jewish Print Music Collection

CONNECTING WITH ISRAEL

The College collaborates with the Israel-Florida Institute, and we are growing relationships with universities in Israel, including:

- Hebrew University
- Haifa University
- Technion
- Jerusalem Academy of Music
- Shenkar College of Engineering, Design and Art



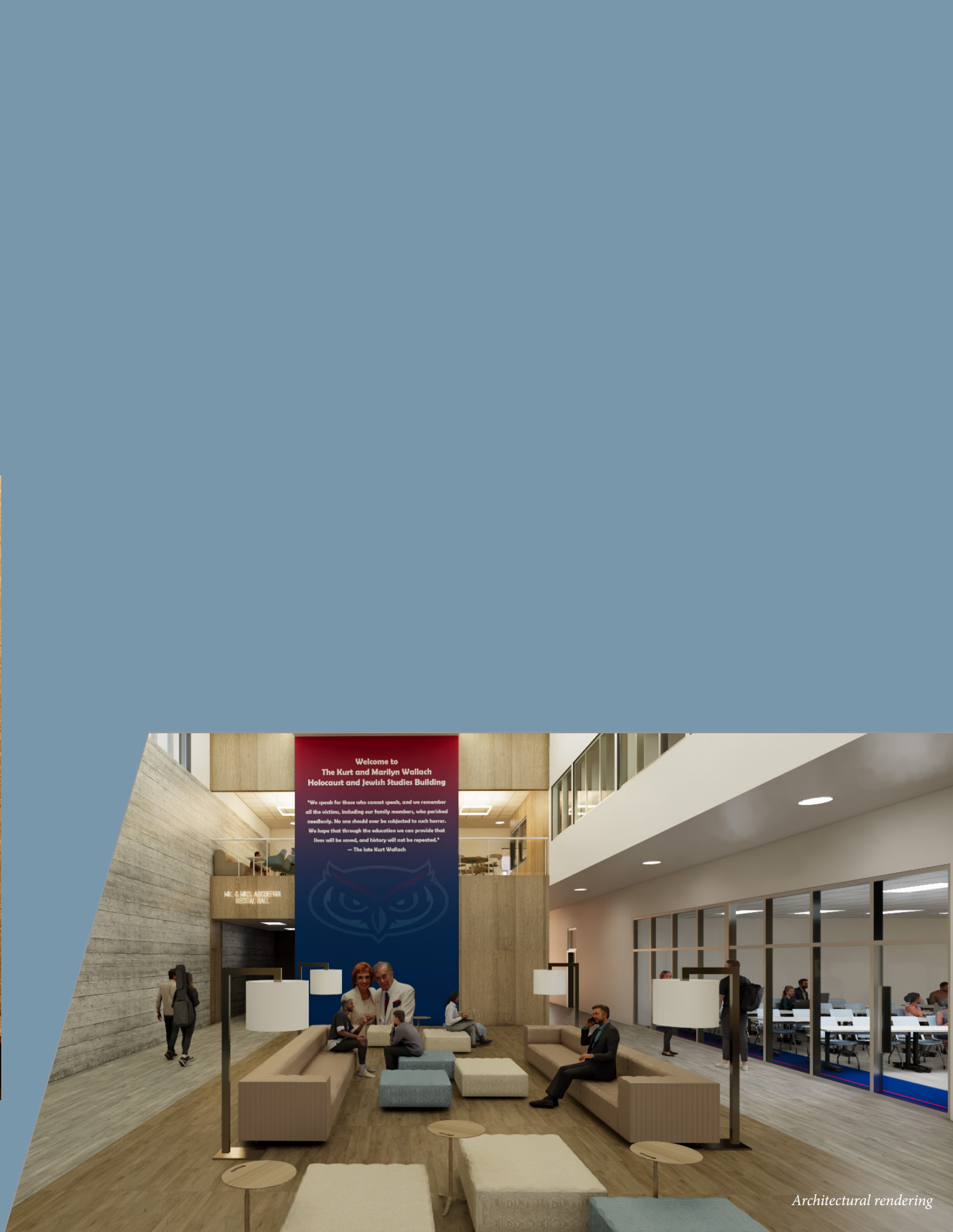
Architectural rendering



Architectural rendering



Architectural rendering



Architectural rendering



FLORIDA ATLANTIC UNIVERSITY

Foundation, Inc.



Architectural rendering

DOROTHY F. SCHMIDT
COLLEGE OF ARTS AND LETTERS
Florida Atlantic University
777 Glades Road,
Boca Raton, FL 33431
fau.edu/artsandletters

CONTACT:

MICHAEL J. HORSWELL
Dean
561.297.3803
horswell@fau.edu

LAURIE CARNEY
Senior Director of
Development and Outreach
561.297.3606
lcarney@fau.edu