



Item: AS: I-1

**COMMITTEE ON ACADEMIC AND STUDENT AFFAIRS**

**Tuesday, March 26, 2019**

**SUBJECT: HARBOR BRANCH OCEANOGRAPHIC INSTITUTE – PILLAR UPDATE**

---

**PROPOSED COMMITTEE ACTION**

No action is necessary. This item is only informational.

**BACKGROUND INFORMATION**

Dr. Jim Sullivan, Executive Director of the Harbor Branch Oceanographic Institute, will give a general update on the status of the strategic plan pillar for ocean science/engineering and environmental sciences.

**IMPLEMENTATION PLAN/DATE**

N/A

**FISCAL IMPLICATIONS**

N/A

---

**Supporting Documentation:** PowerPoint Presentation

**Presented by:** Dr. Jim Sullivan, Executive Director

**Phone:** 772-242-2313



# FAU HARBOR BRANCH PILLAR UPDATE

JIM SULLIVAN, PH.D.

EXECUTIVE DIRECTOR

**HARBOR BRANCH**

FLORIDA ATLANTIC UNIVERSITY

# RAISING THE PROFILE OF THE PILLAR

HARBOR BRANCH

FLORIDA ATLANTIC UNIVERSITY

## PUBLIC LECTURES, MEDIA, OUTREACH & POLITICAL CONNECTIONS

WPEC CBS West Palm Beach

October 17, 2018, 06:16 pm

Sen. Nelson meets with FAU Harbor Branch scientists



FAU's Harbor Branch Oceanographic Institute updates red tide, algal blooms in Florida

BY: WPTV Webteam  
POSTED: 5:13 PM, Oct 24, 2018  
UPDATED: 6:36 PM, Oct 24, 2018

FLORIDA ATLANTIC UNIVERSITY  
DIVISION OF RESEARCH



Harbor Branch launches new program focusing on lagoon threats to health

Written by: Correspondent June 28 2018

OWL RESEARCH & INNOVATION

CHANGING SEAS  
10<sup>th</sup> ANNIVERSARY

SOUTH FLORIDA PBS

Home Episodes

# GROWING THE PILLAR:

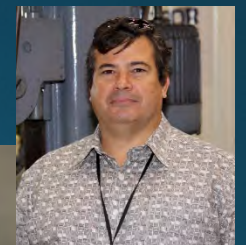
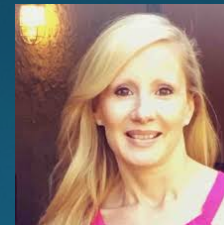
## FIVE NEW FACULTY HIRES COMPLETED:

1. ELECTROCHEMIST (JOINT HIRE W/ I-SENSE)
2. BIOGEOCHEMIST (JOINT HIRE W/ WHC)
3. OCEAN ENGINEER - FLUID DYNAMICS (JOINT HIRE W/ OME)
4. OCEAN ENGINEER - COMPUTATIONAL (JOINT HIRE W/ OME)
5. DEVELOPMENTAL BIOLOGIST (JOINT HIRE W/ WHC)



## NEW ADMINISTRATIVE HIRES:

1. DIRECTOR OF DEVELOPMENT
2. DIRECTOR OF OUTREACH AND ENGAGEMENT
3. ASSOCIATE DIRECTOR OF MEDIA RELATIONS
4. ASSOCIATE DIRECTOR OF COMMUNICATION
5. DIRECTOR OF SCIENTIFIC RESEARCH INFRASTRUCTURE



# PILLAR RESEARCH HIGHLIGHTS:

HARBOR BRANCH

FLORIDA ATLANTIC UNIVERSITY

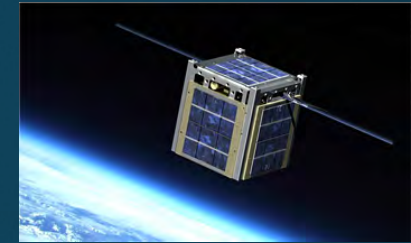
## SOME RECENT GRANTS AND PROJECTS:



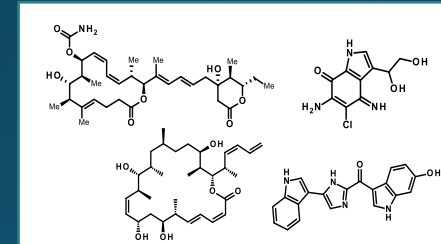
“GROUPEER GUARD” (~ \$5M)



CUBESAT IMAGER FOR OCEAN ECOLOGY (\$300K)



DEVELOPING NATURAL PRODUCTS AGAINST TRIPLE NEGATIVE BREAST CANCER (\$800K)



MOVING TO CLASSIFIED RESEARCH (HBOI IS IN THE PROCESS OF BECOMING A CLEARED FACILITY)

Navy Accepts Final Component for LCS Anti-Submarine Warfare Mission Package

FORT PIERCE, Fla. — The Navy took delivery of the final component of the littoral combat ship (LCS) Anti-Submarine Warfare (ASW) Mission Package Nov. 30, following the successful completion of a rigorous acceptance test regime at the Harbor Branch Oceanographic Institute, Program Executive Office, Unmanned and Small Combatants (PEO USC), Public Affairs said in a Dec. 4 release.

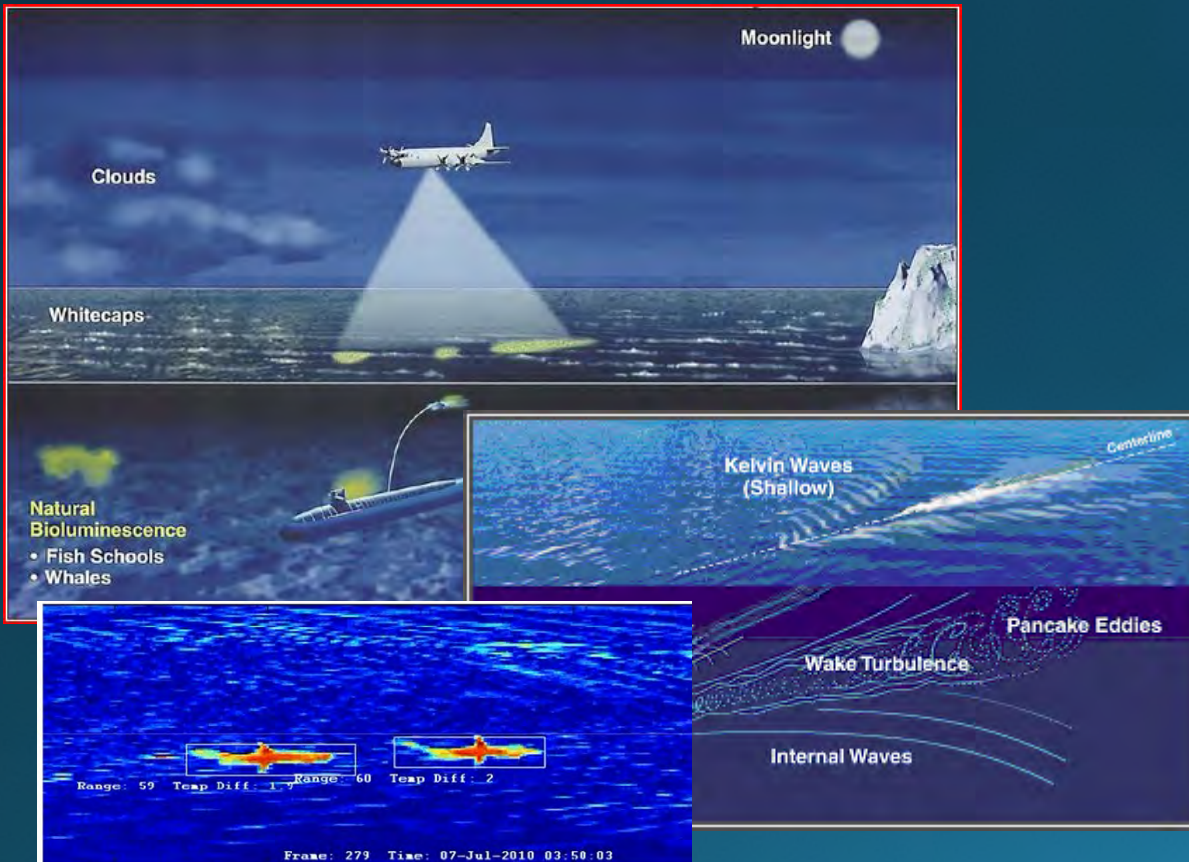
VDS DEPLOYMENT PACKAGE FOR FAST ATTACK VESSELS (FOLLOW ON TO SUCCESSFUL \$2M PROJECT FOR THE LCS)

# PILLAR SUPPORT - FEDERAL APPROPRIATIONS: **HARBOR BRANCH**

FLORIDA ATLANTIC UNIVERSITY

## ONR FY19 APPROPRIATION: PERSISTENT MARITIME SURVEILLANCE

\$15 million funding to improve non-acoustic detection capabilities and sensors.



## USDA FY19 APPROPRIATION: DOMESTIC AQUACULTURE DEVELOPMENT

\$2 million annually recurring funds for advancement of warm water aquaculture science.



# FLORIDA CENTER FOR COASTAL & HUMAN HEALTH

Est. August 2018 at FAU Harbor Branch

FAU/HBOI & Partner Expertise



Florida HAB Crisis



Population Health Impacts



Healthy Environment & Population



## CONDUCTING CRITICAL RESEARCH

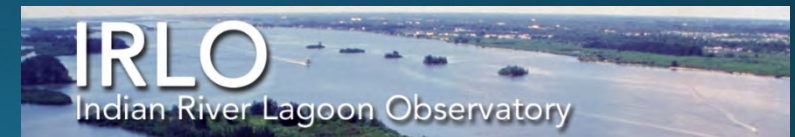
FAU Harbor Branch tests people for levels of toxin released from blue-green algae



NASA, Harbor Branch partner on SeaPRISM to track Lake Okeechobee algae blooms

Tyler Treadway, tyler.treadway@tcpalm.com Published 4:03 p.m. ET May 30, 2018 | Updated 4:23 p.m. ET May 30, 2018

## RECRUITING STAKEHOLDERS & STRATEGIC PARTNERS



Florida Tech, Harbor Branch to Study Algal Bloom Impact on Lagoon Dolphins

An aerial photograph of a large, clear blue body of water, possibly a bay or lagoon. In the center, there is a small, lush green island. The water's color transitions from deep blue to a lighter turquoise near the shore, where some dark patches of seabed or coral are visible. In the background, a residential area with houses and trees is visible along the water's edge. The overall scene is bright and clear.

THANKS!  
QUESTIONS OR COMMENTS?