



GRADUATE COLLEGE
 FLORIDA ATLANTIC UNIVERSITY
 777 Glades Road, SU-80, 101
 Boca Raton, FL 33431

T. 561.297.3624 F. 561.297.1212
graduatecollege@fau.edu
fau.edu/graduate



FLORIDA
 ATLANTIC
 UNIVERSITY

GRADUATE COLLEGE



BE DARING. BE *bold*. BE **FAU** ♥

BE DARING. BE *bold*. BE **FAU** ♥

TABLE OF CONTENTS



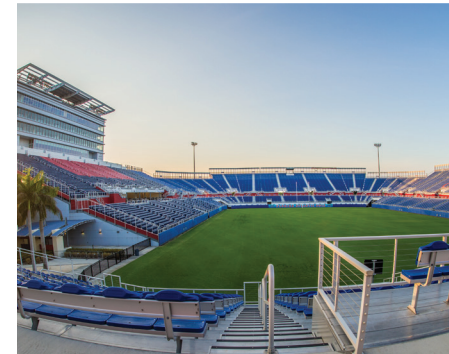
About Florida Atlantic University	2
Colleges and Degree Programs.....	3-6
Graduate Rankings and Awards	7
Research Centers and Institutes	8-9
Campus Locations.....	10-11
FAU at-a-Glance	12
About Graduate Education.....	13
Did You Know?	14
Graduate Student Services	15
Graduate Student Life	16
Admissions Information	17
Graduate Funding.....	18-19
South Florida at-a-Glance	20-21
University Contact Information.....	22

ABOUT FLORIDA ATLANTIC UNIVERSITY

Florida Atlantic University (FAU) offers students a world-class education in a beautiful, subtropical setting. A comprehensive public university that is fully accredited by the Southern Association of Colleges and Schools Commission on Colleges, FAU is currently serving over 30,000 students at sites throughout its six-county service region in Southeast Florida, with state-of-the-art student housing available on the Boca Raton and Jupiter campuses.

Student life as an FAU Owl has never been better. From a football team playing in the 29,419 seat on-campus stadium to over 300 organizations that serve every academic and leisure-time interest, there's something for everyone at FAU. The University has an outstanding faculty of more than 1,000 accomplished scholars and researchers who are known for their excellence in teaching and mentoring. Enrichment opportunities abound, including honors education, internships, hands-on research, and study-abroad experiences. FAU offers 21 intercollegiate sports, 19 of which participate in the NCAA, plus cheer and dance. Students learn in beautiful campus environments, and the beach is never far away.

Florida Atlantic University, part of the State University System of Florida, is a highly research-active institution with more than 250,000 square feet of laboratory space and over 40 research centers and institutes. Our graduate students pursue advanced degrees in 65 master's, three specialist, and 23 doctoral degree programs, with 89 concentrations available.



COLLEGES & DEGREE PROGRAMS



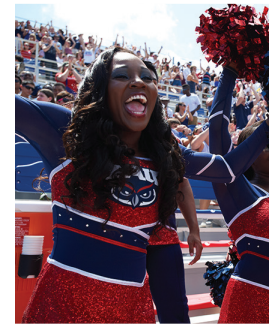
M = Masters S = Specialist D = Doctorate

CHARLES E. SCHMIDT COLLEGE OF MEDICINE			
Biomedical Science	M		
Medicine			D
CHARLES E. SCHMIDT COLLEGE OF SCIENCE			
Applied Math and Statistics	M		
Biological Sciences	M		
Business Biotechnology	M		
Chemistry	M		D
Complex Systems and Brain Sciences			D
Environmental Science	M		
Experimental Psychology			D
Geosciences	M		D
Integrative Biology			D
Concentrations:			
Biomedical Science			
Environmental Science			
Marine Science and Oceanography			
Neuroscience			
Marine Science and Oceanography	M		
Mathematics	M		D
Medical Physics	M		
Physics	M		D
Psychology	M		
CHRISTINE E. LYNN COLLEGE OF NURSING			
Nursing			D
Nursing	M		
Concentrations:			
Nursing Administration and Financial Leadership			
Adult/Gerontological Nurse Practitioner			
Advanced Holistic Nursing			
Clinical Nurse Leader			
Family Nurse Practitioner			
Nurse Educator			
Psychiatric Mental Health Nurse Practitioner			
Nursing Practice			D
Concentrations:			
Adult/Gerontological Nurse Practitioner			
Family Nurse Practitioner			
Psychiatric Mental Health Nurse Practitioner			
COLLEGE FOR DESIGN AND SOCIAL INQUIRY			
Criminology and Criminal Justice	M		
Concentrations:			
Corrections			
Crime and Criminal Behavior			
Policing			
Nonprofit Management	M		
Public Administration	M		D
Social Work	M		D
Urban and Regional Planning	M		

COLLEGES & DEGREE PROGRAMS

M = Masters S = Specialist D = Doctorate

COLLEGE OF BUSINESS			
Accounting			M
Concentrations:			
Accounting Information Systems			
Forensic Accounting (online only)			
Tax			
Accounting, Executive			M
Concentrations:			
Business Valuation			
Digital Accounting Forensics and Data Analytics			
Forensic Accounting			
Forensic Accounting and Business Valuation			
Forensic Accounting and Digital Accounting Forensics			
Professional Accounting			
Business Administration			D
Concentrations:			
Accounting			
Finance			
Information Technology			
Management			
Marketing			
Business Administration			M
(Flexible, Online, Executive, and Professional)			
Concentrations:			
Accounting			
Entrepreneurial Management			
Finance			
Health Administration			
Hospitality and Tourism Management			
International Business			
Management Information Systems			
Marketing			
Operations Management			
Sport Management			
Economics			M
Concentrations:			
Financial Economics			
International Economics			
Finance			M
Health Administration			M
Health Administration, Executive			M
Information Technology and Management			M
Taxation			M
Taxation, Executive			M
COLLEGE OF EDUCATION			
Counselor Education			D
Counselor Education		S	
Concentrations:			
Clinical Mental Health Counseling			
School Counseling K-12			



COLLEGES & DEGREE PROGRAMS



M = Masters S = Specialist D = Doctorate

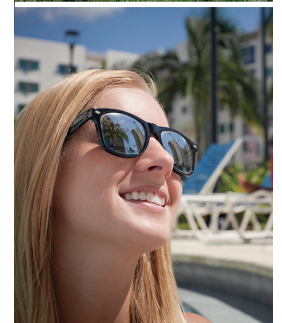
COLLEGE OF EDUCATION (CONTINUED)

Counselor Education	M		
Concentrations:			
Clinical Mental Health Counseling			
Clinical Rehabilitation Counseling			
School Counseling			
Curriculum and Instruction		S	D
Curriculum and Instruction	M		
Concentrations:			
Art			
Biology			
Chemistry			
Early Childhood Education			
English			
ESOL Education			
French			
Mathematics			
Multicultural Education			
Physics			
Reading			
Social Science			
Spanish			
Teacher Leadership			
Early Childhood Education	M		
Educational Leadership	M		D
Concentrations:			
Adult and Community Educational Leaders			
Higher Education Leaders			
School Leaders (K-12)			
Educational Leadership		S	
Concentrations:			
Adult and Community Educational Leaders			
School Leaders (K-12) with Certification			
School Leaders (K-12) Advanced			
Educational Psychology	M		
Elementary Education	M		
Concentrations:			
ESOL plus Certification			
Environmental Education	M		
Exceptional Student Education	M		D
Exercise Science and Health Promotion	M		
Concentrations:			
Exercise Physiology			
Health Promotion			
Strength and Conditioning			
Instructional Technology	M		
Reading Education	M		
Secondary Education plus Certification	M		
Concentrations:			
Art			
Biology			
Chemistry			

COLLEGES & DEGREE PROGRAMS

M = Masters S = Specialist D = Doctorate

English/ESOL			
Mathematics			
Physics			
Social Science			
Speech-Language Pathology/Audiology			M
COLLEGE OF ENGINEERING AND COMPUTER SCIENCE			
Bioengineering			M
Civil Engineering			M
Concentrations:			
Structural/Geotechnical Engineering			
Transportation/Geomatics Engineering			
Water Resources/Environmental Engineering			
Computer Engineering			M
Computer Science			M
Electrical Engineering			M
Information Technology and Management Advanced			M
Mechanical Engineering			M
Ocean Engineering			M
DOROTHY F. SCHMIDT COLLEGE OF ARTS AND LETTERS			
Anthropology			M
Art MFA			M
Art Graphic Design MFA			M
Communication			M
Comparative Studies			M
Creative Writing MFA			M
English			M
History			M
Languages, Linguistics and Comparative Literature			M
Concentrations:			
Comparative Literature			
French			
Teaching of French			
Linguistics			
Spanish			
Teaching of Spanish			
Media, Technology and Entertainment MFA			M
Music			M
Political Science			M
Sociology			M
Theatre MFA			M
Concentrations:			
Design and Technology			
Acting			
Women, Gender, and Sexuality Studies			M





U.S. NEWS AND WORLD REPORT

FAU's Christine E. Lynn College of Nursing is ranked 1st in Florida and 44th in the nation for its Doctor of Nursing program and 2nd in Florida and 45th in the nation for its Master of Science Nursing program by *U.S. News & World Report's* 2018 Best Graduate Schools Guidebook.

The College of Education Clinical Rehabilitation Counseling program was ranked 24th by *U.S. News & World Report* in 2015, as a top specialty program in the nation.

BLOOMBERG BUSINESSWEEK

Florida Atlantic University's part-time MBA is the top-ranked program in South Florida and 27th among public universities in the nation in 2015 by *Bloomberg Businessweek*.

SPORTBUSINESS INTERNATIONAL

FAU's MBA in Sport Management program ranked 3rd in the World, 3rd in the USA, and 1st in Florida by *SportBusiness International* in 2016.

GraduatePrograms.com

FAU ranked among the top 50 online graduate schools based on ratings and reviews posted on Graduateprograms.com by more than 25,000 enrollees in over 600 different online programs.

Florida Atlantic University is taking its place among the world's great research centers and has been given the designation of a "High Research Activity" university by the Carnegie Foundation for the Advancement of Teaching. FAU faculty members were awarded funding grants totaling \$42 million in 2015-2016. FAU brings in millions of dollars in research funding from state, federal, and private sources including the National Science Foundation, the Office of Naval Research, the National Institutes of Health, the U.S. Department of Energy, and the U.S. Department of Health and Human Services, which benefit our over 40 research centers and institutes.

FAU LIBRARIES

FAU Libraries operate on the Boca Raton, Davie, Fort Lauderdale, Harbor Branch, and Jupiter campuses. A graduate student lounge is located in the Wimberly Library on the Boca Raton campus on the west side of the second floor in LY 245 A-G, and features restricted card access for graduate students. The lounge includes four study rooms, white boards, a conference room, and open space with two PCs and two Mac computers. The libraries house approximately 3.7 million items, including books, periodicals, government documents, microforms, maps, media, and other materials - a rich academic collection along with unique special collections in book arts, documents, print and recorded music, rare books and manuscripts, and archival materials. The libraries also provide a wealth of electronic resources, including more than 580,000 full-text electronic books and 59,000 full-text electronic journals, plus access to more than 400 proprietary databases. They also offer group study rooms, numerous computer stations, and accessibility services for students.



JESSICA KLASSEN

Dr. Jessica Klassen graduated from FAU with a Ph.D. in Integrative Biology. After serving as a lecturer at Texas A&M, teaching courses such as Conservation Biology and Wildlife in a Changing World, Dr. Klassen works as a post-doctoral researcher at Mississippi State University. She studies the seasonal migrations and land use of wintering waterfowl and is part of a project investigating the road mortality of brown pelicans.



RESEARCH CENTERS AND INSTITUTES

CAMPUS LOCATIONS

STUDENT HIGHLIGHT



VANESSA RAYMOND
(B.S.N.+D.N.P.)

- FAU B.S.N. Nursing and B.A. Biological Sciences (Palm Beach State College transfer)
- D.N.P. Nursing candidate
- Emergency room nurse at Bethesda Hospital East



- Adams Center for Entrepreneurship
- Carl DeSantis Business and Economics Center
- Center of Acoustics and Vibrations
- Center for Advancement of Distance Education Technologies
- Center for Autism and Related Disabilities
- Center for Biomedical and Materials Physics (CBAMP)
- Center for Complex Systems and Brain Sciences
- Center for Cryptology and Information Security
- Center for Economic Education
- Center for Forensic Accounting
- Center for Global Engagement
- Center for Holocaust & Human Rights Education
- Center for Hydrodynamics and Physical Oceanography
- Center for Infrastructure and Constructed Facilities
- Center for Intermodal Transportation Safety and Security
- Center for Marine Materials
- Center for Marine Structures and Geotechniques
- Center for Molecular Biology and Biotechnology
- Center for Rare and Genetic Neurological Diseases
- Center for Services Marketing and Management
- Center for Urban and Environmental Solutions
- Center of Excellence in Biomedical and Marine Biotechnology
- The Center for the Study of Values and Violence after Auschwitz
- Center for Systems Integration
- Center for Women, Gender & Sexuality Studies
- Child Welfare Institute
- Christine E. Lynn Center for Caring
- Community Justice Institute
- The Disability Center
- Ernest O. Melby Community Education Center
- Florida Center for Environmental Studies
- Institute for Ocean & Systems Engineering - SeaTech
- Intensive English Institute
- International Center for the Advancement of Political Communication and Argumentation
- Karen Slattery Educational Research Center for Child Development
- Louis and Anne Green Memory and Wellness Center
- Phil Smith Center for Free Enterprise
- Phyllis and Harvey Sandler School of Social Work Aging Academy
- Pine Jog Environmental Education Center
- Public Procurement Research Center
- Quantum Foundation Center for Innovation in School and Community Well-being
- Southeast National Marine Renewable Energy Center (SNMREC)
- The Teaching and Leadership Center
- Weppner Center for LEAD and Service Learning

FAU BOCA RATON 561-297-3000

777 Glades Road
Boca Raton, FL

More than 70 percent of FAU's 30,000 students take classes at FAU's first and largest campus, and the majority of the University's 170+ degree programs are based here. Located just three miles from the Atlantic Ocean and the beautiful beaches of Boca Raton, the campus features everything you expect from a modern university – suite-style housing for over 4,000 students, new athletic and recreational facilities, art galleries, a pharmacy, a barber shop, a café/movie theater complex and so much more – all in a vibrant, tropical setting with a student body that is the most diverse of all Florida's public universities.



FAU DAVIE 954-236-1000

3200 College Avenue
Davie, FL

More than 5,000 students take classes at FAU's second-largest campus. Conveniently co-located with Broward College as part of the South Florida Education Center, FAU Davie offers coursework in 30 degree programs through the colleges of Arts and Letters, Business, Design and Social Inquiry, Education, Nursing, and Science. The campus features more than 300,000 square feet of labs and classrooms as well as faculty, staff, and student offices. It also hosts the innovative Teaching and Leadership Center and is the base of operations for FAU's Everglades research and restoration efforts.



FAU DANIA BEACH 954-924-7000

101 North Beach Road
Dania Beach, FL

The Dania Beach facility is home to ocean engineering research and technology development in the areas of acoustics, marine vehicles, hydrodynamics and physical oceanography, marine materials, and nanocomposites. Dania Beach builds on five decades of excellence at FAU as home to the nation's first ocean engineering program.



CAMPUS LOCATIONS



FAU FORT LAUDERDALE 111 East Las Olas Blvd
954-236-1000 Fort Lauderdale, FL

Located in downtown Fort Lauderdale, the campus provides a “real life” urban laboratory for students pursuing an accredited degree in architecture and is the location for the College of Business’ Executive Master of Accounting program. The campus is also home to MetroLAB, a collaborative exhibition and event space for FAU’s engagement with the community.



FAU HARBOR BRANCH 5600 US 1 North
772-465-2400 Fort Pierce, FL

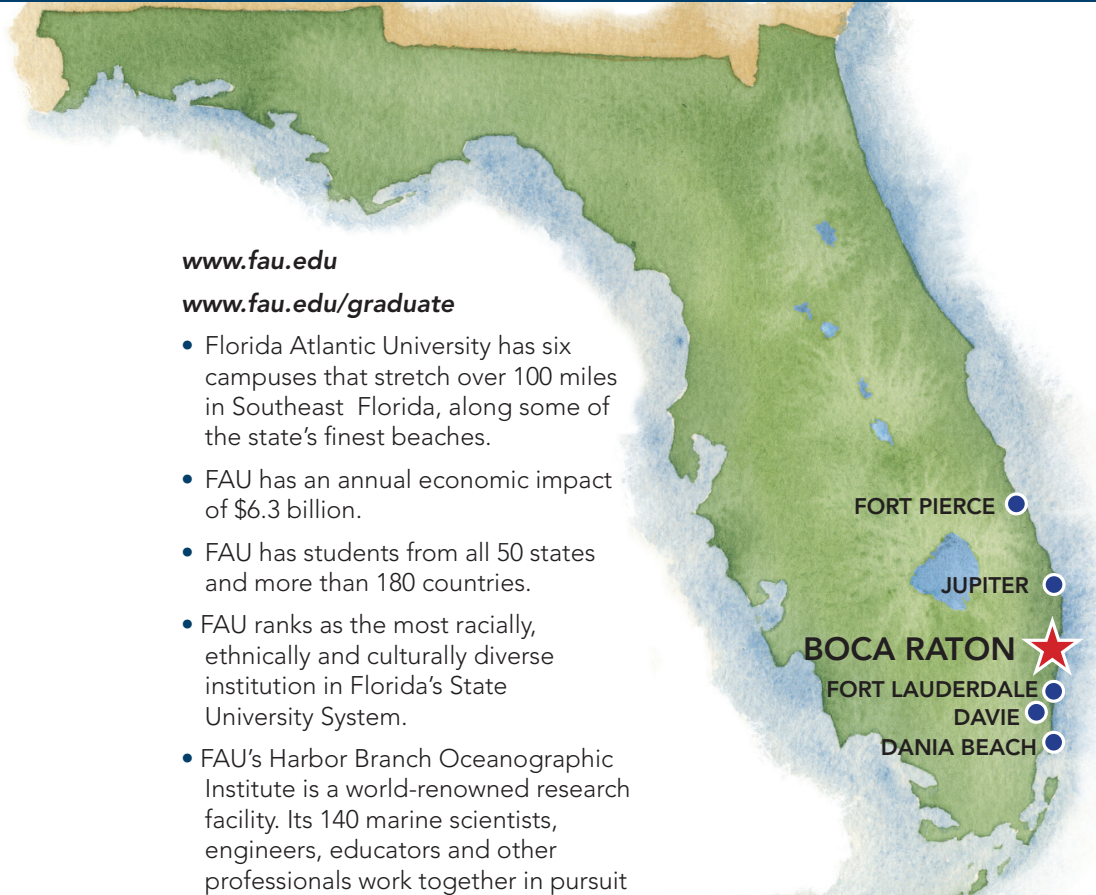
FAU’s Harbor Branch Oceanographic Institute (HBOI) is dedicated to exploring the world’s oceans and integrating the science and technology of the sea with the needs of humankind. As a base of operations for a host of research, internship, and academic programs – such as coral reef and estuary studies, marine mammal rescue and rehabilitation, semester-at-sea programs and a variety of research positions and internships – undergraduate students, graduate students and faculty find HBOI’s high-tech facilities and dynamic environment perfect for their varied pursuits.



FAU JUPITER 5353 Parkside Drive
561-799-8500 Jupiter, FL

The John D. MacArthur Campus at Jupiter offers students coursework in programs from the colleges of Arts and Letters, Design and Social Inquiry, Education, and Science. It is home to the Harriet L. Wilkes Honors College, as well as the Center for Environmental Studies, the Hibel Museum of Art and research facilities for two of the world’s leading research organizations, the Max Planck Florida Institute for Neuroscience and Scripps Florida, a division of The Scripps Research Institute. Just four miles from the beach, students at FAU Jupiter enjoy the resources of a large research university and the advantages of a small campus setting.

FAU AT-A-GLANCE



www.fau.edu

www.fau.edu/graduate

- Florida Atlantic University has six campuses that stretch over 100 miles in Southeast Florida, along some of the state’s finest beaches.
- FAU has an annual economic impact of \$6.3 billion.
- FAU has students from all 50 states and more than 180 countries.
- FAU ranks as the most racially, ethnically and culturally diverse institution in Florida’s State University System.
- FAU’s Harbor Branch Oceanographic Institute is a world-renowned research facility. Its 140 marine scientists, engineers, educators and other professionals work together in pursuit of its mission, expressed as Ocean Science for a Better World.

Mileage from Boca Raton

- Fort Lauderdale..... 20 miles
- West Palm Beach 30 miles
- Miami 45 miles
- Key Largo..... 100 miles
- Orlando 195 miles
- Key West..... 205 miles

FAU’s main campus in Boca Raton is located three miles from the beach.



STUDENT HIGHLIGHT

JOSEF KHOURY (B.S.+M.S.)

- FAU B.S. in Neuroscience & Behavior
- M.S. in Biomedical Science
- Graduate Teaching Assistant
- President of the American Medical Student Association

ABOUT GRADUATE EDUCATION

DID YOU KNOW?

STUDENT HIGHLIGHT



SHANE KEPLEY
(B.S.+M.S.+PH.D.)

- FAU B.S. in Mathematical Science 1½ years (state college transfer)
- Master's en Passant and Ph.D. candidate in Mathematics
- Graduate Teaching Assistant
- Served as paratrooper in U.S. Army
- Active member of Florida National Guard

GRADUATE COLLEGE

The Graduate College is a service college dedicated to student success.

The Graduate College works closely with graduate students, faculty, and staff to promote quality graduate education. Florida Atlantic University fosters a diverse intellectual environment with internationally recognized faculty and cutting-edge research facilities. Our graduate students pursue advanced degrees in 65 master's, three specialist, and 23 doctoral degree programs, with 89 concentrations available. Graduate study at FAU offers the following benefits:

- Multiple campuses in Southeast Florida for ultimate flexibility
- Alternative scheduling tailored to your graduate program
- A cost-effective education with many sources of financial aid and assistance, as well as affordable state tuition rates

FLORIDA ATLANTIC UNIVERSITY ALUMNI

FAU alumni include U.S. and foreign dignitaries, Emmy Award and Pulitzer Prize winners, an astronaut, and executives who have served in organizations such as Google, Franklin Templeton, Boeing, eBay, Motorola, and the White House. Approximately 80% of FAU's over 150,000 alumni live in the Florida counties of Broward, Palm Beach, Miami-Dade, and St. Lucie.



YOU CAN EARN YOUR MASTER'S IN ONE YEAR

The University offers combined bachelor's to master's degrees which allow you to take graduate courses in your senior year that count towards your master's degree. In some areas you can earn a master's degree in only one year. FAU offers over 20 different combined degree programs. In five years, you can graduate with both a bachelor's and a master's from FAU! Learn about FAU's Pathways Scholarship for combined degree students in the Graduate Funding section.

COLLEGES OFFERING COMBINED BACHELOR'S AND MASTER'S DEGREES

- Charles E. Schmidt College of Science
- College of Business
- College for Design and Social Inquiry
- College of Education
- College of Engineering and Computer Science
- Dorothy F. Schmidt College of Arts and Letters

MASTER'S EN PASSANT

You can earn a master's "along the way" to your doctorate in select graduate programs. Also known as a master's en passant, earning a master's degree along the way to the doctorate is available in four of FAU's colleges, across 13 degree programs. If you are interested in pursuing a doctorate at FAU, speak to an academic advisor in your prospective department to see if a master's along the way is an option for you.

ALUMNUS HIGHLIGHT



POLLOP PHONPORNWITHOON
(2+2½+1)

- Broward College A.A. 2 years
- FAU B.S. in Civil Engineering 2½ years
- M.S. in Civil Engineering 1 year (B.S.+M.S. Combined)
- Graduate Assistant
- Project Coordinator at Palm Beach County Water Utilities



GRADUATE STUDENT SERVICES

GRADUATE STUDENT LIFE

ALUMNA HIGHLIGHT



EDMÉE MORIN-KOUGOUCHEFF
 Edmée Morin-Kougoucheff is a former collegiate tennis player who came to the U.S. from France to pursue a higher education. She is an alumna of the FAU MBA Sport Management program and served as a graduate assistant in the College of Business. During the program, she interned for the Delray Beach Open and worked for the Miami Dolphins, as well as the FAU football team. She is now the Sales Manager at the Evert Tennis Academy. Edmee explains, "I decided to get this degree at FAU because of its wonderful reputation and its impressive alumni. All faculty have at least 10 years of experience in the sports industry."



GRADUATE COLLEGE SERVICES

- Graduate Information Sessions
- Graduate Admissions
- New Graduate Student Orientations
- Professional Development Workshops
- Thesis and Dissertation Formatting Workshops
- Scholarly Writing Workshops
- Teaching Assistant Workshops

UNIVERSITY SERVICES

- Graduate and Professional Student Association
- Career Center University
- Center for Excellence in Writing
- Counseling and Psychological Services
- Student Health Services
- Military and Veterans Affairs
- Student Accessibility Services

FAU FOOTBALL STADIUM

Home of the Owls football team, the 29,419-seat stadium is located in the north central area of the Boca Raton campus. The open-air stadium features 6,000 premium seats, including 24 suites, 26 loge boxes, 1,000 premier club seats, 4,000 priority club seats, and state-of-the-art amenities.

GRADUATE AND PROFESSIONAL STUDENT ASSOCIATION

The GPSA advocates for the interests of graduate and professional students university wide and strives to enrich their experiences. The GPSA provides academic support resources, social/networking opportunities, and conference travel funding.



STUDENT INVOLVEMENT

The University's Division of Student Affairs provides programs and services to promote academic success and total student development, helping students become intellectually engaged and more informed about civic responsibility. Career development, health services, volunteer opportunities, campus recreation, counseling, and academic assistance are available. Additionally, the Program Board plans events for the entire University community. FAU hosts more than 300 clubs including:

- Academic Organizations
- Service Organizations
- Diversity Appreciation Organizations
- Honor Societies
- Spiritual and Religious Groups
- Sports Clubs

HOUSING: INNOVATION VILLAGE

State-of-the-art housing is available on the Boca Raton campus. Innovation Village offers on-campus housing specifically for graduate students, including 210 units with individual laundry facilities within each apartment. In addition, numerous off-campus housing options are available nearby.



GABRIELLE BARBARITE (B.S.+M.S.+PH.D.)

- FAU B.S. and Master's *en Passant*, Biology
- Ph.D. in Integrative Biology
- Graduate Teaching Assistant
- FAU Harbor Branch Mission: Ocean Discovery Coordinator

ALUMNA HIGHLIGHT



ADMISSIONS INFORMATION



STUDENT HIGHLIGHT



KRISTI PETERSON
(B.B.A. TO M.ED.)

- B.S. in Business Administration, minor in Economics and Leadership Studies
- M.Ed. in Educational Leadership
- Graduate Assistant
- Elite Owl and Red Jacket
- Women Making Waves Award recipient

APPLYING FOR ADMISSION

Make FAU your choice for a quality graduate education. Where you choose to pursue your doctoral, master's, or specialist degree is one of the most important decisions you will make. Detailed information on admission requirements and procedures can be found on the prospective student page of the Graduate College website or by contacting the advisor of your program of interest. In addition, the Graduate College can provide you with support during the admissions process.

Apply online at:
fau.edu/graduate/applyonline.

Prospective students should apply for admission as early as possible. Some academic units have early admission deadlines and should be contacted for specific dates. An admission decision cannot be made until both the Graduate College and the academic unit have received all required materials.

GRADUATE FUNDING

FELLOWSHIPS AND AWARDS

Numerous fellowships and awards are available for graduate students. Fellowships can be university awarded, federally funded, or offered by external organizations.

GRADUATE ASSISTANTSHIPS

Graduate assistantships are available in a variety of university departments and offices. Graduate assistantship positions can include general administrative duties, teaching assignments, research projects, or a combination of the above. Interested graduate students should contact their academic departments and university administrative offices to inquire about available assistantships.

PATHWAYS SCHOLARSHIP

This scholarship awards up to \$2,000 to FAU students enrolled in combined or advanced standing graduate degree programs. The scholarship is distributed in two increments of \$1,000 during the first and last semester of the graduate program. Students apply during the junior year of undergraduate study.

BRIGHT FUTURES

Florida Academic Scholars earning a baccalaureate degree in seven semesters or fewer (or the equivalent in credit hours) may receive funding for one term of graduate study (up to 15 semester hours) paid at the undergraduate rate.

GRADUATE RESEARCH SCHOLARSHIP

The Graduate College offers scholarships to support graduate research and assist with unexpected research costs. Visit the Graduate College website for more information at fau.edu/graduate.



DONTAY DOUGLAS

- Master of Music in Wind Conducting
- Graduate Teaching Assistant
- Graduate conductor of FAU University bands
- Former Director of Bands at MacArthur High School

STUDENT HIGHLIGHT



GRADUATE FUNDING

STUDENT HIGHLIGHT

KEITH MURPHY

Keith Murphy is a doctoral candidate in the Integrative Biology program in the Charles E. Schmidt College of Science. Keith is researching the "Postprandial Sleep Dynamics in Drosophila," or more specifically, the effects of food comas on the brains of the common fruit fly. Keith is a recipient of an inaugural Three Minute Thesis (3MT®) Scholarship for his research, which he presented at the Fall 2016 3MT® Championship. Murphy remarks, "the value of this scholarship is its ability to encourage young scientists to approach public communications from a training perspective. People don't realize that most research results in conceptual advances rather than the discovery of a new drug, or the rescue of a species. In this case, the direct value to the public is their understanding of these new concepts." Visit [YouTube.com/FAUGraduateCollege](https://www.youtube.com/FAUGraduateCollege) to watch Keith and other graduate students present their research.



Pictured: Keith Murphy

THREE MINUTE THESIS (3MT®) COMPETITION SCHOLARSHIPS

FAU's inaugural 3MT® Competition took place November 18, 2016, showcasing some of the University's top graduate student researchers. This exciting opportunity is open to any active, enrolled FAU graduate student in good academic standing with the University. This competition provides all participants with a unique and invaluable professional development experience and championship winners are awarded research scholarships and awards up to \$2,500.

MILITARY BENEFITS

There are special student benefits, aid, and services available for active military members and veterans. Contact the FAU Department of Military and Veterans Affairs for more information at fau.edu/vets.

FINANCIAL AID

Submit your FAFSA early! The FAU priority deadline is March 1 each year. Graduate students may be eligible for Financial Aid such as FAU Graduate Grants, Unsubsidized Direct Loans, Perkins Loans, Graduate PLUS Loans, Work Study, and various fellowships. Visit FAFSA.gov to apply.

SOUTH FLORIDA AT-A-GLANCE



SOUTH FLORIDA AT-A-GLANCE

- Sub-tropical climate
- No state or local income tax
- Average annual temperature: 75 (F) degrees
- Watersports in the area include surfing, water-skiing, wakeboarding, kayaking, snorkeling, and superb fishing and SCUBA diving
- Home to the headquarters of Fortune 500 companies, such as Office Depot, FPL Group, AutoNation, and Ryder System
- Boca Raton is home to a number of tech companies, including Modernizing Medicine – named by *Forbes* as one of America's Most Promising Companies
- Public and private schools in Boca Raton include 13 elementary, five middle, and four high schools, 27 private schools, and a number of special education centers



GISLA BUSH

A graduate of FAU High School, Gisla Bush began FAU's Master of Urban and Regional Planning program at 18 years old. Gisla aims to give back to the community by being an advocate for change in underprivileged neighborhoods and communities, ultimately working towards becoming the Secretary of Housing and Urban Development at the federal level.

Gisla works as a Planner for the City of Pompano Beach. She served as Chief of Staff of the Florida Atlantic Planning Society and remains an active member of her community alongside her sisters, who together started a youth math tutoring program.

ALUMNA HIGHLIGHT



TRANSPORTATION

Air Travel

International airports in West Palm Beach, Fort Lauderdale, and Miami are within an hour's drive.

Tri-Rail

This commuter rail line serves West Palm Beach, Fort Lauderdale, and Miami with convenient station locations near FAU campuses and area airports.

GETTING AROUND CAMPUS

Intercampus Shuttle

FAU offers an intercampus shuttle service from the Boca Raton campus to the John D. MacArthur Campus in Jupiter from Monday to Friday, with morning and afternoon routes.

Boca Raton Campus Shuttle

Parking and Transportation Services provides a free on-campus shuttle service that allows you to park your car and move between classes without having to find another parking space on campus. With multiple shuttles, you never have to wait long to be picked up.

Night Owls

Get rides to class, your dorm, or car with the Night Owls – a free ride service that can pick you up right at your car or building to ensure safe and quick transit around campus.



Graduate College.....	561.297.3624
Athletics	866.328.6957
Controller's Office	561.297.2748
Division of Student Affairs	561.297.3988
Financial Aid.....	561.297.3530
General Information.....	561.297.3000
Graduate and Professional Student Association	561.297.1170
Housing	561.297.2880
Libraries.....	561.297.3770
Registrar	561.297.3050
Study Abroad	561.297.1208
Center for Global Engagement	561.297.3049

NOTICE: Copies of this publication can be obtained in an alternate format by contacting the Graduate College at 561-297-3624 or graduatecollege@fau.edu. Please allow at least 10 days to process this request.